

# Double Glazing



## GLAZED WINDOWS/ DOORS TESTED TO AS2047

SR100 SERIES FRAMING SYSTEM: THERMAL BREAK 100 x 50 mm FRONT GLAZED – 35mm POCKET

SR100 TILT WINDOW: 100 Front IGU Glazed – 35mm Pocket

### Features

- 100mm Frame Depth
- 50mm Sight Line generally
- Front Glazed
- Designed for Thermal Break Applications
- Available in non broken Single glazing 16-20 pocket
- AS2047-2014 / AS4420,1-2016 tested, NATA certified
- Compliant with relevant Australian Standards
- Accepts 24 to 28 IGUs
- Variety of Standard Frame Designs or Custom made
- Dry Glazed with High Performance Santoprene gaskets
  - Anti stretch gaskets, captive wedge design
  - Wet glazed where structurally required
- Accepts the Proprietary Smartech Double Q-Ion Seal System

### Fabrication

- Easy Structural Rivet and Cornerstake joinery fabrication
- Easy Fit Slip together Dovetail connections
- Simple Assembly with range of Standard Designs

### Product Applications

- Shopfronts, Served Counters, Wintergardens, Balustraded Openings
- Generally can span up to 5500mm in width
- Suitable up to 2000mm opening heights : For heights greater than 2000 refer to Glazed Tilt Walls/ Doors

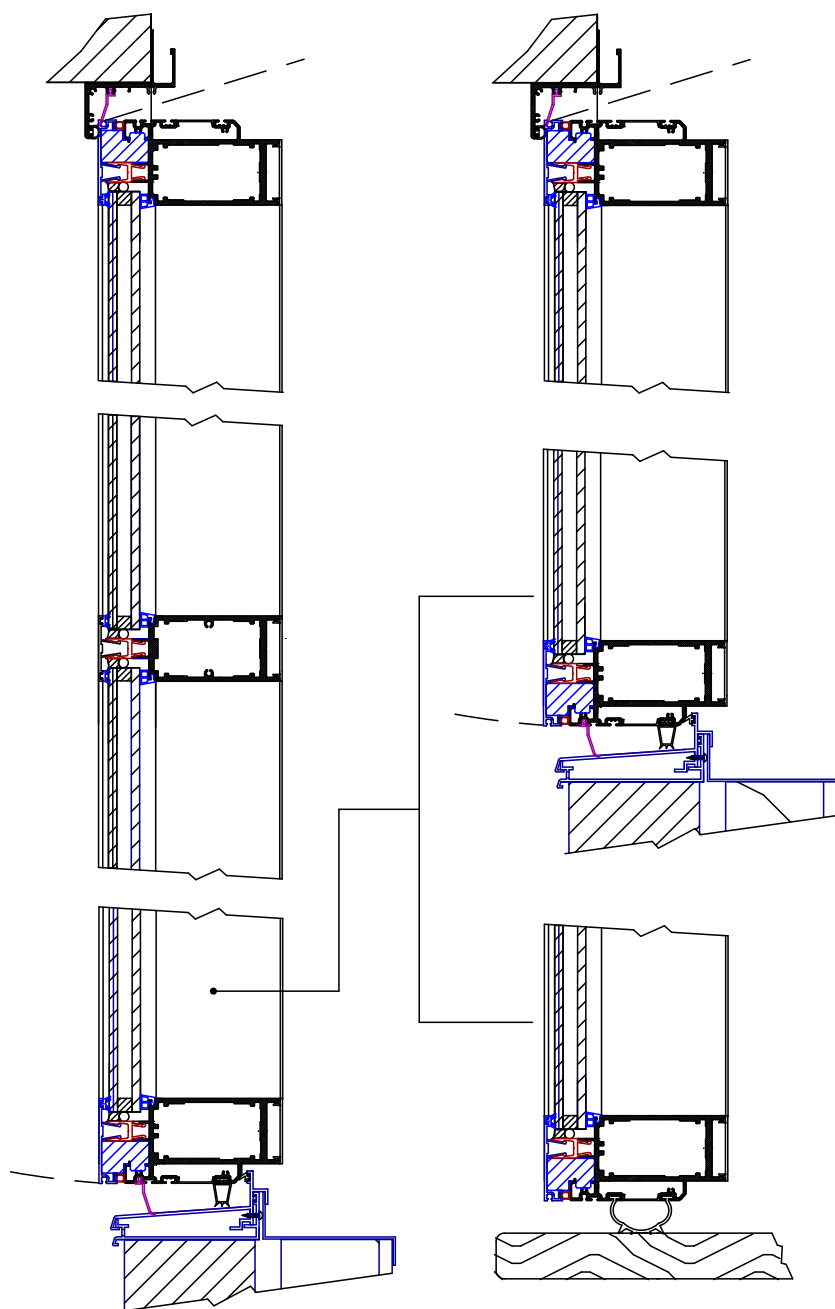
### OPERATION : SR100 TILT WINDOW

- Counterweighted manual operation as standard or Motorised
- Guided, quiet and smooth operation with minimal maintenance
- Tilts out and upwards giving clear unimpeded counter space and view

# Double Glazing

## GLAZED WINDOWS/ DOORS TO AS2047: CONT.

SR100 TILT WINDOW: 100 Front IGU Glazed – 35mm Pocket



### IGU LINTEL SEAL

- Seal AS2047 tested & NATA certified
- Fitted with Bulb & Sweep Seal
- Extrusion fits under lintel

### DOUBLE SKIN BRICK OPENING

- Sill seal AS2047 tested and NATA certified
- Fitted with Triangle and Sweep Seals
- Sealing against a Threshold with Sub Sill

### OPTION : SERVERY COUNTER

- Fitted with Bulb Seal
- Sealing directly on top of Counter (high degree of sealing but not NATA Certified)

# Double Glazing Performance

## GLAZED WINDOWS/ DOORS TO AS2047: CONT.

SR100 TILT WINDOW: 100 Front IGU Glazed – 35mm Pocket

Performances			
<b>COMFORT : as per Test Report No 2019-124-SI-2047</b>			
Acoustic performance	Typically: $R_w(C, C_{tr})=30$ (-2:-6)dB /32 (-1:-4) dB, depending on glazing type		
Air Infiltration - AS2047-2014	LOW : Air leakage +0.9 L/s.msq at +150 Pa, -0.8 L/s.msq at -150 Pa		
Water Penetration - AS2047-2014	Water Penetration Resistant Pressure : 450 Pa		
Structural Deflection - AS2047-2014	Sash Head : Pass @ +/-1800 Pa Mullion : Pass @ +/-1800 Pa		
Resistance and Ultimate Strength - AS2047-2014	SLS : +1500 Pa and - 1800 Pa ULS : +4500 Pa and - 4500 Pa } N5 , C3 (Cyclonic)		
<b>ENERGY : according to NFRC modelled simulations of the whole window</b>			
Glass Type	U-Value	SHGC	VT
6.38 Clear Lam/12mm Argon/ 6mm EnviroTone	2.83	0.52	0.56
6.38 Clear Lam/12mm Argon/ 6mm EnviroTone Grey	2.86	0.49	0.27
6.38 Clear Lam/12mm Argon/ 6mm EnviroTone Green	2.85	0.49	0.49
6.38 Clear Lam/12mm Argon/ 6mm EVantage Clear	2.91	0.47	0.47
6.38 Clear Lam/12mm Argon/ 6mm EVantage Grey	2.91	0.42	0.22
6.38 Clear Lam/12mm Argon/ 6mm EVantage Super Blue	2.91	0.42	0.27
6.38 Clear Lam/12mm Argon/ 6mm EVantage Sol Tech	2.84	0.49	0.43
6.38 Clear Lam/12mm Argon/ 6mm Comfort Plus Clear	2.84	0.52	0.56
6.38 Clear Lam/12mm Argon/ 6mm Comfort Plus Neutral	2.85	0.49	0.40
8.38 Clear Lam/12mm Argon/ 8.38 Comfort Plus Clear	2.84	0.76	0.40
8.38 Clear Lam/10mm Argon/ 10 Enviro Tone Clear	2.83	0.51	0.54
8.38 Clear Lam/10mm Argon/ 10 Grey	3.47	0.45	0.19
8.38 Clear Lam/10mm Argon/ 10 Sol Tech	2.84	0.48	0.41
8.38 Clear Lam/10mm Argon/ 10 Sunergy	3.00	0.49	0.45
<ul style="list-style-type: none"> <li>This listing shows the performance values of the window according to NFRC modelled simulations of the window using a variety of IGU glazing types.</li> <li>VT is the glass visible light transmission.</li> <li>U Value: Insulation: The lower the number the better the performance</li> <li>SHGC : Is the Solar gain coefficient. The lower the value the better the performance</li> </ul>			
<b>SAFETY</b>			
Fire Resistance	BAL 40 (Compliance to AS3959) In order to achieve BAL 40 rating as per Clause 8.5.1 Deem to Satisfy: <ul style="list-style-type: none"> <li>IGUs must incorporate 6mm toughened glass instead of Float or Lam.</li> <li>IGUs must be externally screened using a fine mesh metal screen</li> <li>All Seals are flame retarded and IGUs are glazed using silicone</li> </ul>		