



Smartech™

WWW.SMARTECHDOORSYSTEMS.COM.AU

2020/21
COMPANY PROFILE

LETTER OF COMPANY DIRECTOR

Smartech is a leading Australian specialist in the development and marketing of innovative and sustainable aluminium solutions for windows, doors and walls systems, that open vertically. We develop tailor-made solutions for all market sectors – from residential to commercial and industrial projects.

Our high-quality systems all meet stringent standards in terms of comfort, security, architectural design and energy efficiency.

Industrial doors are the foundation story of Smartech. Over time, the company evolved to manufacture both residential and commercial architectural aluminium windows and doors.

Smartech's reputation is based on its commitment to innovative design, unsurpassed craftsmanship and excellent customer service.

"I would like to extend an invitation to tour our production facility where I can show you first-hand our company's commitment to excellence. I am confident that you will leave feeling completely assured that your products are being made using the latest technology with the strictest quality standards. Let me know if you would like to schedule this tour."



A handwritten signature in black ink, appearing to read "Anthony Cassar". The signature is fluid and cursive, written over a light-colored background.

Anthony Cassar
Managing Director

PROFILE OF OUR COMPANY

Smartech's Managing Director, Anthony Cassar, was born into a family who for generations designed and manufactured doors.

Acting on his passion to take doors and windows to a new level of functionality and style. Smartech Door Systems was founded in 2008 with a humble beginning – starting out in a small garage space where Anthony's first innovative folding aluminium garage door was born.

His deep knowledge of the industry is a product of his immersion in the industry since childhood and experience of fabricating and installing custom folding doors and windows around Australia and internationally for the past 18 years. From this experience, Anthony identified a gap in the Australian market that has culminated in the design of Smartech's unique range of products.



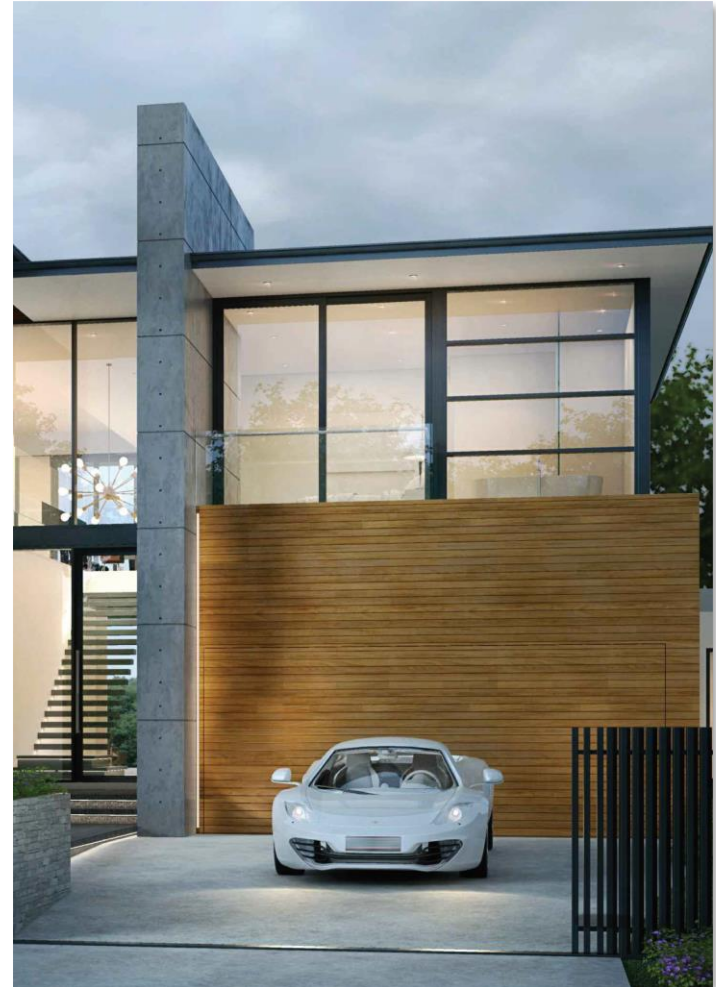
PROFILE OF OUR COMPANY CONT.

Offering superior products and custom solutions, Smartech is recognised as one of the most respected and client focused companies in the industry, benefiting from generations of accumulated knowledge in the field. Smartech have distinguished themselves as Australia's first choice amongst Architects, Developers, Designers and Builders.

Smartech continue to dedicate themselves to being a leading manufacturing company of major projects, that lead the way in both innovation and sustainability.

Smartech's success has been built on our attention to detail, excellent customer service and superior products.

We are proud to offer an extensive range of products that will suit every residential, commercial or industrial building. Smartech also develops solutions that are tailored to the individual customer or project.



OUR PRODUCT RANGE

FOLDING RANGE

Smartech Folding Systems let nothing get in the way. Uniquely folding overhead, our folding Windows, Doors and Walls open to create unimpeded spaces. Unlike bi-folds, they are not stacked to the side, nor do they require a floor track. Just wide open space.



Standard Folding Door



Standard Folding Window



Off-Set Folding Door



Zero Line Folding Window



UPLIFT RANGE

Smartech Uplift Window and Door Systems, inspired by traditional door designs, lift vertically into the headspace above the opening, close to the internal wall. Designed especially for high ceiling applications, the Uplift Systems are available as a single panel or double panel units where the headspace is limited.



Uplift Door



Downlift Window



TILT RANGE

Smartech Tilt Systems lift the Wall, Door or Window up and above, leaving clear space and the unimpeded view we embrace with indoor-outdoor living. Our beautiful and strong products operate effortlessly to ensure everyone has maximum access to all the possibilities of their surroundings.



Tilt Window



Tilt Wall



Tilt Door



WORK EXAMPLES

OUR PORTFOLIO

88 Beaconsfield Pde Apartment, Port Melbourne, Australia
21 Awning Windows were installed

01A International - Same Architect as YAS Island Club –
Abu Dhabi



Beaconsfield Parade Apartment, Port Melbourne, Australia

88 Beaconsfield Parade is an inner-city foreshore residential development incorporating 27 luxury apartments over 5 levels with a single corner retail space at the ground floor level and two levels of basement car parking.



Beaconsfield Parade Apartment, Port Melbourne, Australia





Yen Yen Wu,
Founder and Lead
Architect of Genome
Architects

"It's one continuous surface," Wu says, her voice a mix of pride and wonder at how far technology has come. "There are no joints. It's almost like the floor of an art gallery."

And when it rains, windows can still be left open without any splash-back, thanks to their indented triangular shape – Wu's quiet take on the traditional monsoon window.

As gestures go, it's a welcome one, especially in a country with a tropical climate that makes such features a

necessity, rather than an architectural nicety.

The result is a house that thoughtfully resolves many issues of site orientation, climate and spatial flow.

It has, as Wu puts it, a rational compact plan that incorporates spaciousness especially in the common areas.

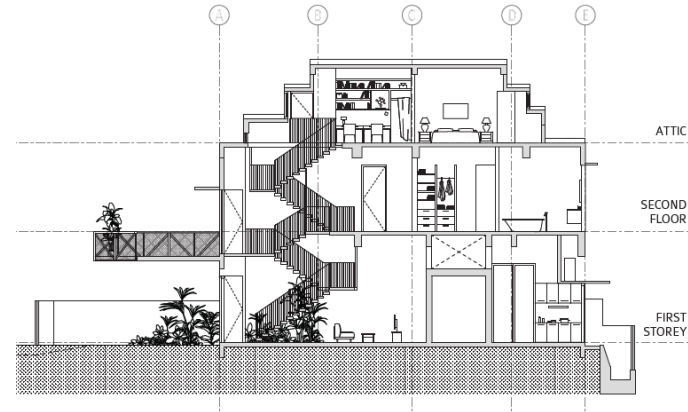
But beyond that, it smartly incorporates mechanical systems – including automated lighting, automated doors and voice-activated windows – not for their sake, for their contributions in the resolution of site-specific problems while "maintaining the natural

The light-well permits the cultivation of an indoor garden, framed by a seamless epoxy terrazzo floor system and a row of motorised horizontal concertina doors by Smartech Door System.

Singapore Craft House – Client: V-TECH Builders







/ 3

The light-well permits the cultivation of an indoor garden, framed by a seamless epoxy terrazzo floor system and a row of motorised horizontal concertina doors by Smartech Door System.

In turn, the wall is part of a two-and-a-half-storey-high light-well, at the foot of which is a bijou garden – both passive cooling features that are very effective in dissipating heat.

To the side of the light-well is a row of motorised horizontal concertina doors by Smartech Door System.

“They’re so common in Australia, but there is little expertise on them in Singapore,” Wu says.

When fully folded up, the doors act like brise-soleils that provide ventilation and shade from the elements.

A considerably less obvious sleight of hand is that Wu has gathered all the living spaces in the upper stories – the bedrooms, sitting room and the family study – and contained them within a cube, the outlines of which are created by literal internal walls and windows.

On the exterior, the form of the cube is obviously delineated by its white walls.

And yes, the cube does have a functional

purpose beyond aesthetics or whimsy.

“Everyone wants a high atrium,” Wu explains, “but with air-conditioning, this creates a huge air leak.”

The effect of containing all the living spaces that typically need to be cooled within a controlled space effectively leaves the rest – such as corridors, passageways and internal courtyard – to be passively cooled.

“Metaphorically and physically, this allows the cube to float quite freely when read alongside the 10m column-free motorised glass door façade below the cube.”

If it’s not already evident, Craft House is a quiet ensemble of parts, much of their discrete purpose hidden until a need arises.

The light-well, for instance, features a timber-clad ceiling that descends on a motorised pulley to allow the household to easily and safely hang or change the ceiling decorations, not least fairy lights and Chinese New Year lanterns.

The floor, meanwhile, was literally cast in place with a seamless epoxy terrazzo floor system.

WORK EXAMPLES

OUR PORTFOLIO

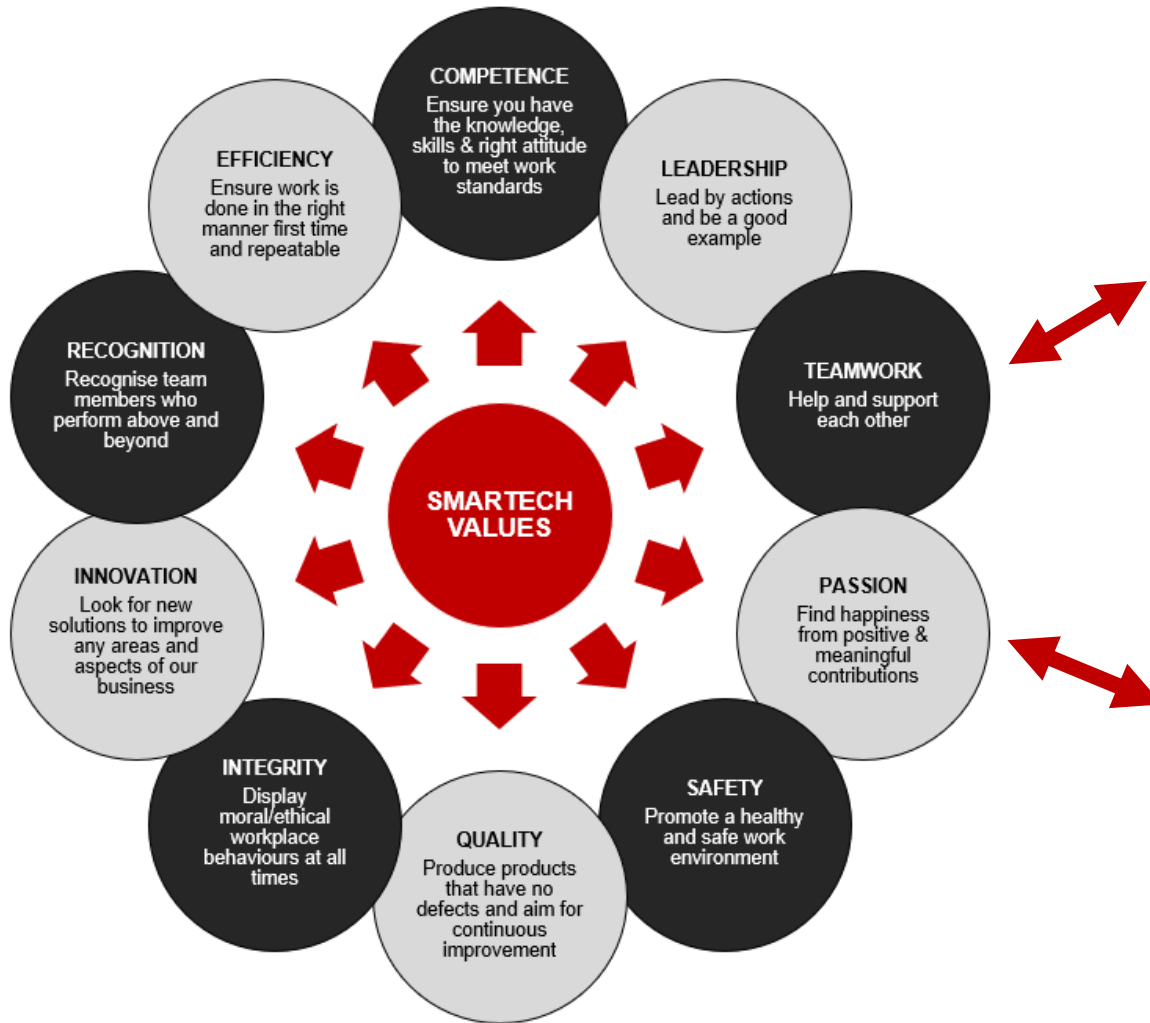
Kula Beach House, Queensland, Australia

Smartech installed our Tilt Windows into 3 Kula Beach Houses to create absolute flow between entertainment zones and the outdoor area.

Our window systems are designed with corrosive spaces in mind. This makes them perfect for coastal areas such as Kula Beach. Additionally, their effective seals and insulation ensure our systems are energy efficient.



VALUES, VISION & MISSION



OUR VISION

To be an international award-winning leader in the upmarket vertical door and window industries.

Thoughtful design, elegant yet strong.

OUR MISSION

At Smartech we continually refine and improve our designs and processes so our customers experience exceptional service, design and functionality.

We align ourselves with strategic partners that help us deliver absolute client satisfaction.

OUR FACTORY

- All doors and windows are manufactured at our factory in Truganina, Victoria, located 22km west of the Melbourne CBD.
- The factory includes production areas, research and development and a large modern office space.
- We run 2 new Emmegi Phantomatic X6 CNC machines 7.7 meters in length with a capacity of producing 20 doors/windows per week.



CONTACT US

Head Office & Production Facility

-  42 Paraweena Drive, Truganina
Victoria Australia 3029
-  (03) 9747 9233
-  sales@smartechdoorsystems.com.au
-  www.smartechdoorsystems.com.au